

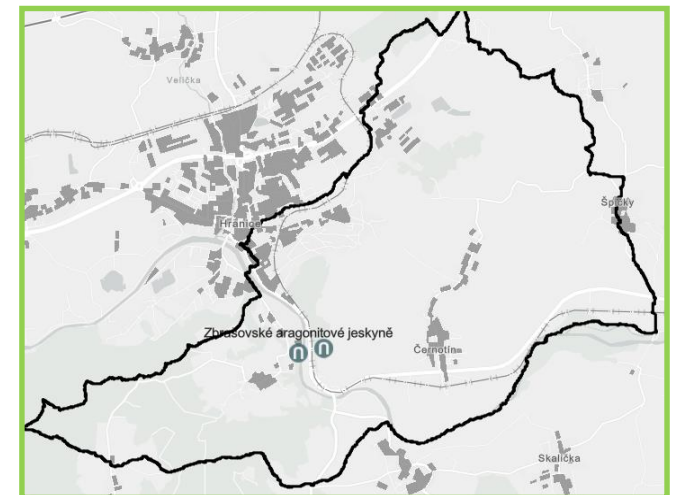
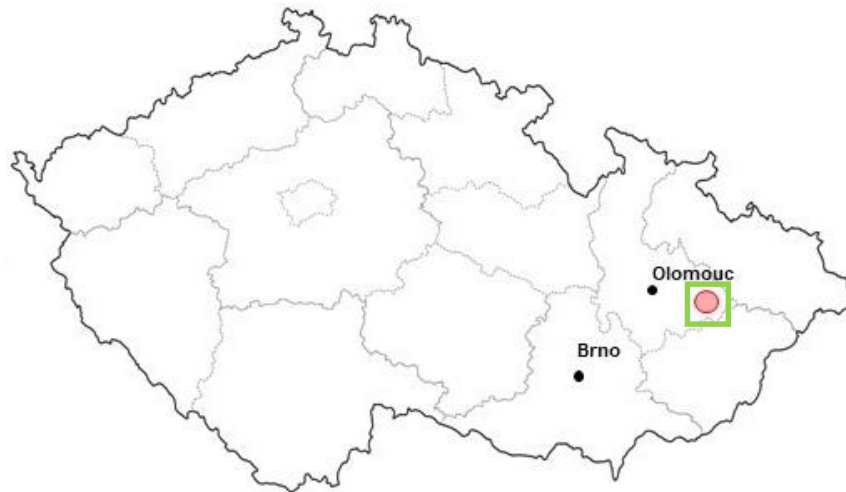
Strengths and threats of tourism in the Hranice Karst

Hana Vavrouchová, Petra Oppelová, Jozef Sedláček, Kristýna Kohoutková

14. 5. 2024 – Public recreation and landscape protection – with the environment hand in hand!

Hranice Karst – basic characteristics

- hydrothermal (hypogenic) karst (the only one in the Czechia)
- small-scale location (approx. 5 x 3 km) - N 49 ° 31 ', E 17 ° 45 '
- carbonate rocks of Devonian and Paleozoic age; numerous karst formations (caves, sinkholes, chasms); carbonated mineral water...
- significant points: Hranice Abyss, Aragonit Caves
- diverse land use and various stakeholders (agriculture, forestry, mining, spa and balneology, mining, tourism, landscape protection...)



General context

- globally unique area with many natural and cultural-historical values,
- part of a very attractive tourist area,
- inconsistent management of values,
- lack of cooperation/management plan,
- limited tourist infrastructure,
- **transit character (the predominance of one-day tourists),**
- sustainable tourism vs. residents recreation?

- **publicity, cooperation, management**

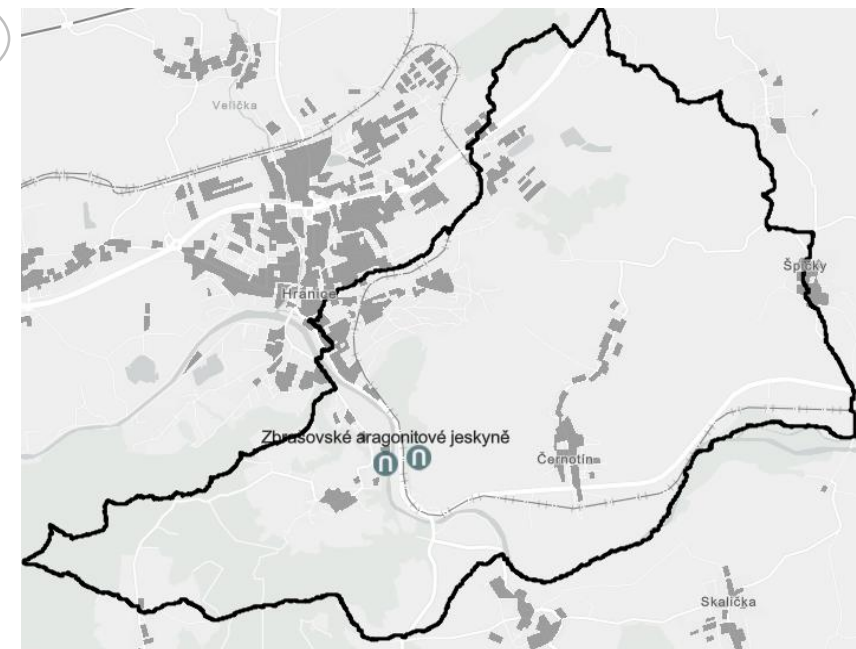
NÁRODNÍ GEOPARK
KRAJINOU BŘIDLICE

LPA
LITOVELSKÉ
POMORAVÍ

Helštýn

LPA
JESENÍKY

LPA
POODŘÍ

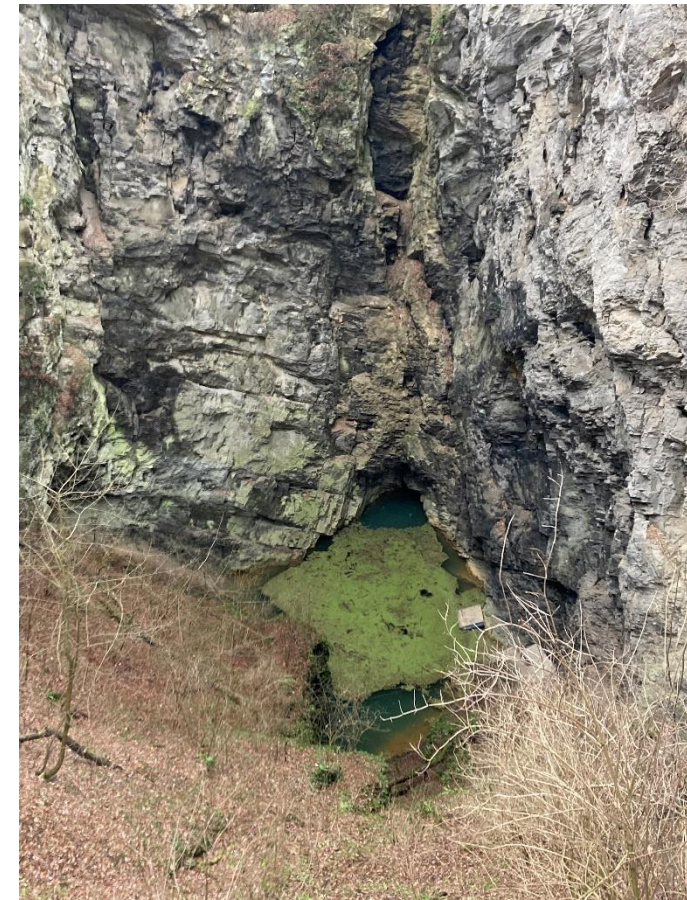


LPA
BESKYDY

Hostýn

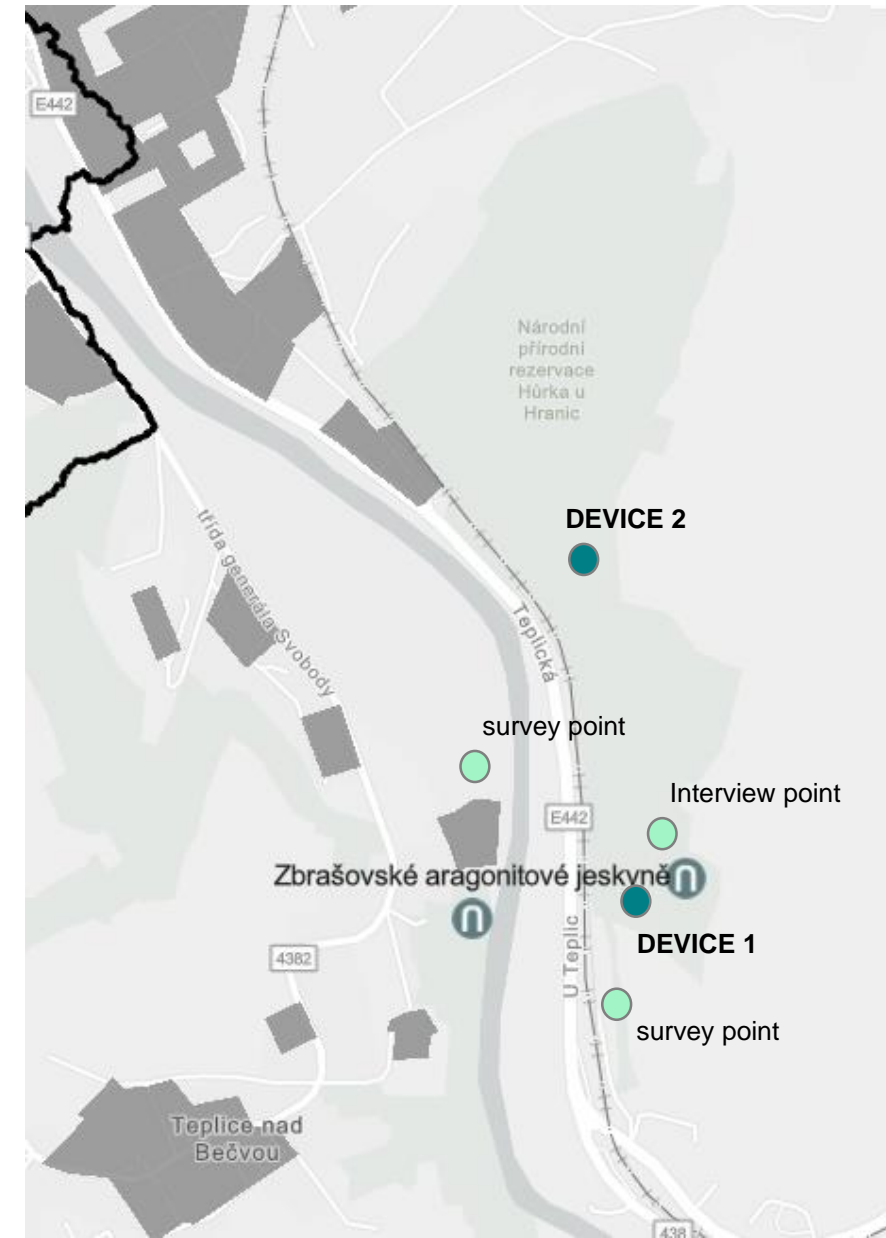
Methodology

- monitoring of tourists/visitors in Hranice Karts
- participatory assessment of tourist potential (various stakeholders)
- expert assessment of tourist potential



Monitoring of visitors around the Hranice Abyss

- 12/2021-02/2023
- quantitative and qualitative monitoring
- visitor characteristics/profil
 - two counting devices (Eco-counter PYRO, TRAFx Trail Counter),
 - interviews around the Hranice Abyss
 - survey on Information point and Teplice colonnade



Expert and participative identification of conflicts in tourist context - on thematic and spatial level

- interviews with selected interested parties/stakeholders (representatives of local government, farmer, forester and cave manager),
- online questionnaire survey among the inhabitants of the Hranice Karst (150 inhabitants),
- a survey among tourists (colonnade in Teplice nad Bečvou and Information point Hranice Abyss – a total of 335 respondents).
- expert assessment (based on a review of local and regional strategies and a field survey)



identification of spatial conflicts, possibilities for improving spatial management, and residents' attitudes to tourism development

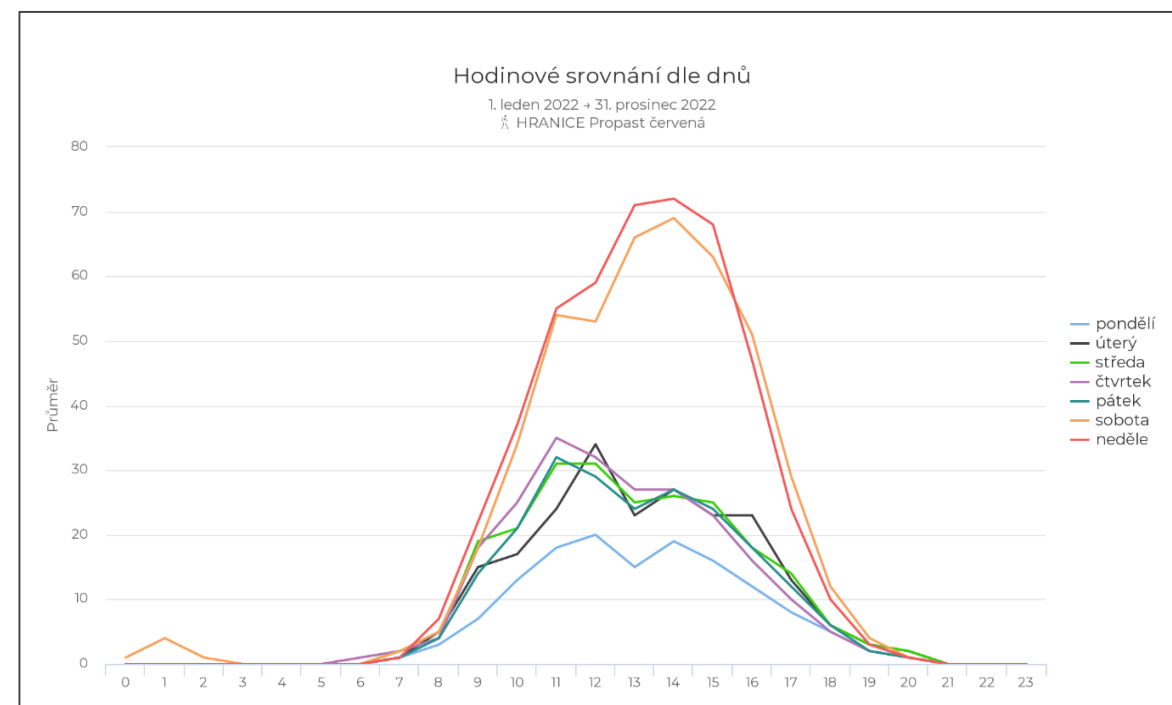
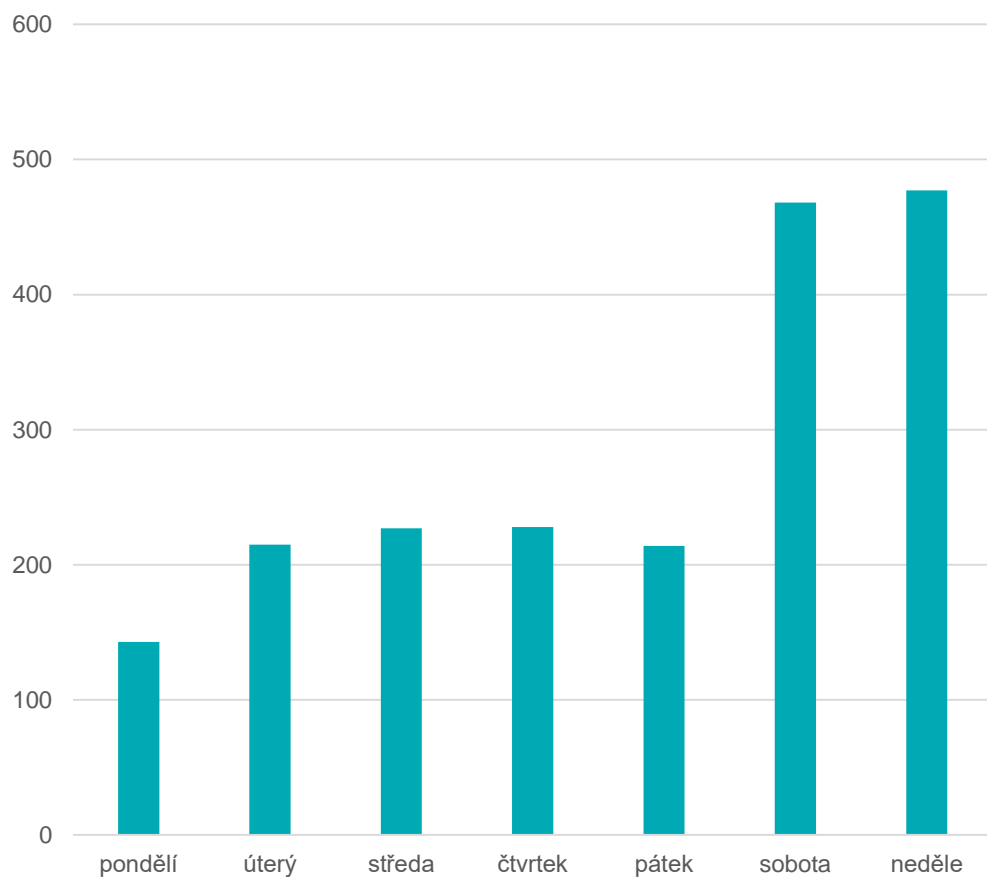
Monitoring of visitors around the Hranice Abyss (rok 2022)

total: **min. 56 000**

day average: **cca 200**

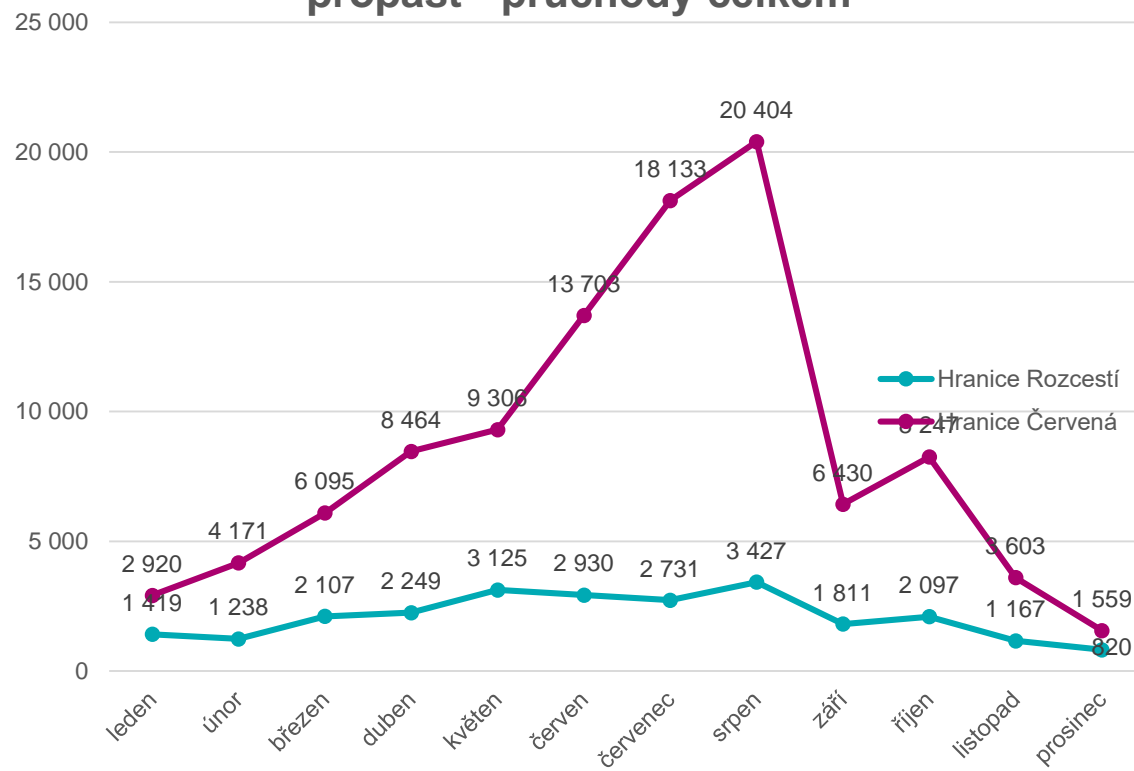
month average: **cca 5000**

days average (2022)

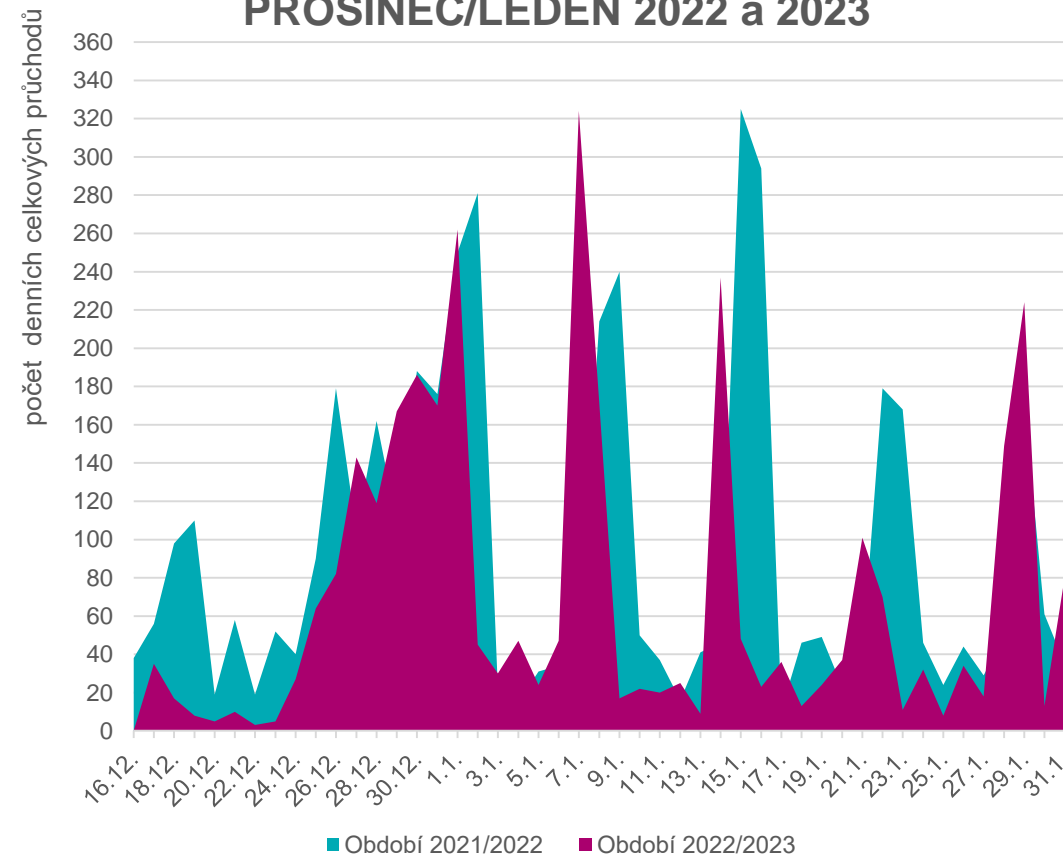


Monitoring of visitors around the Hranice Abyss (rok 2022)

Měsíční návštěvnost lokality Hranická propast - průchody celkem

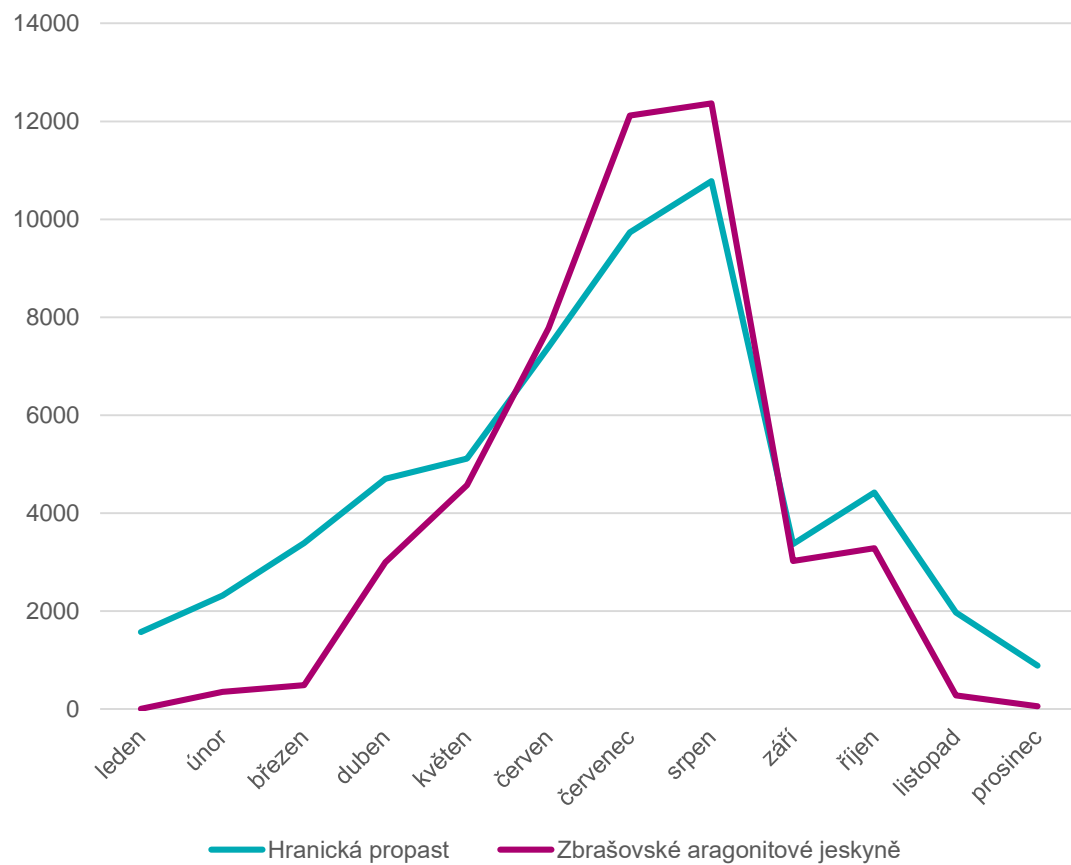


Porovnání návštěvnosti na měřícím profilu PROSINEC/LEDEN 2022 a 2023

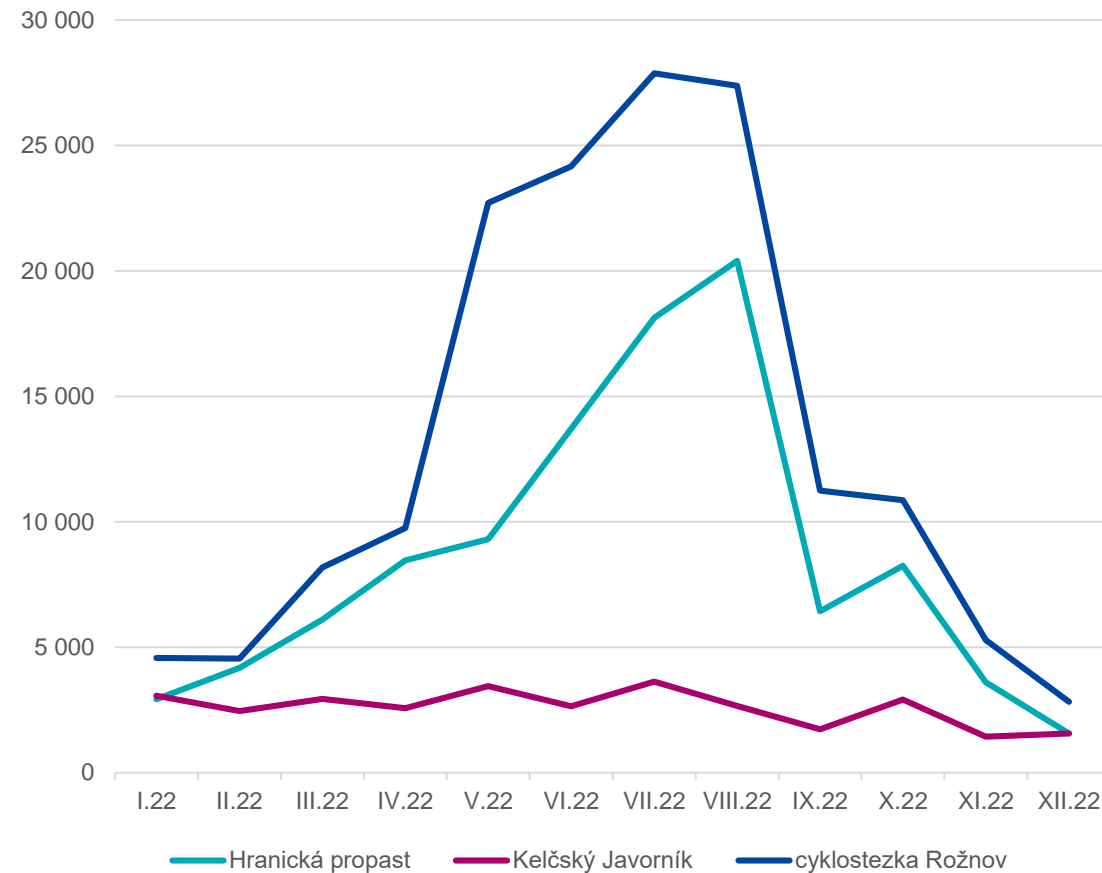


Monitoring of visitors around the Hranice Abyss (rok 2022)

Počty návštěvníků u Hr. propasti a ve ZAJ

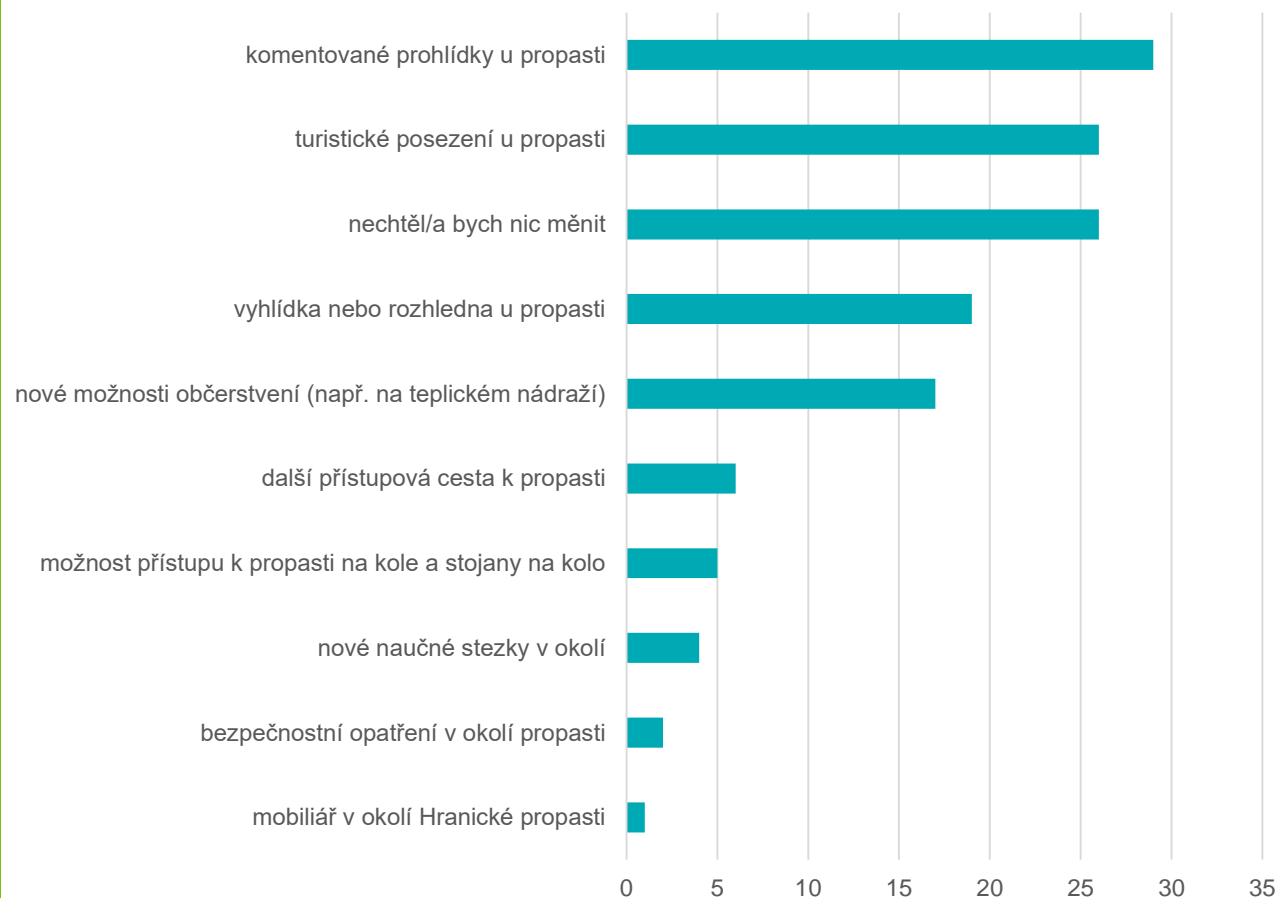


Srovnání s lokalitami mimo region



Interviews and survey (visitors)

Preference respondentů (rozhovory)



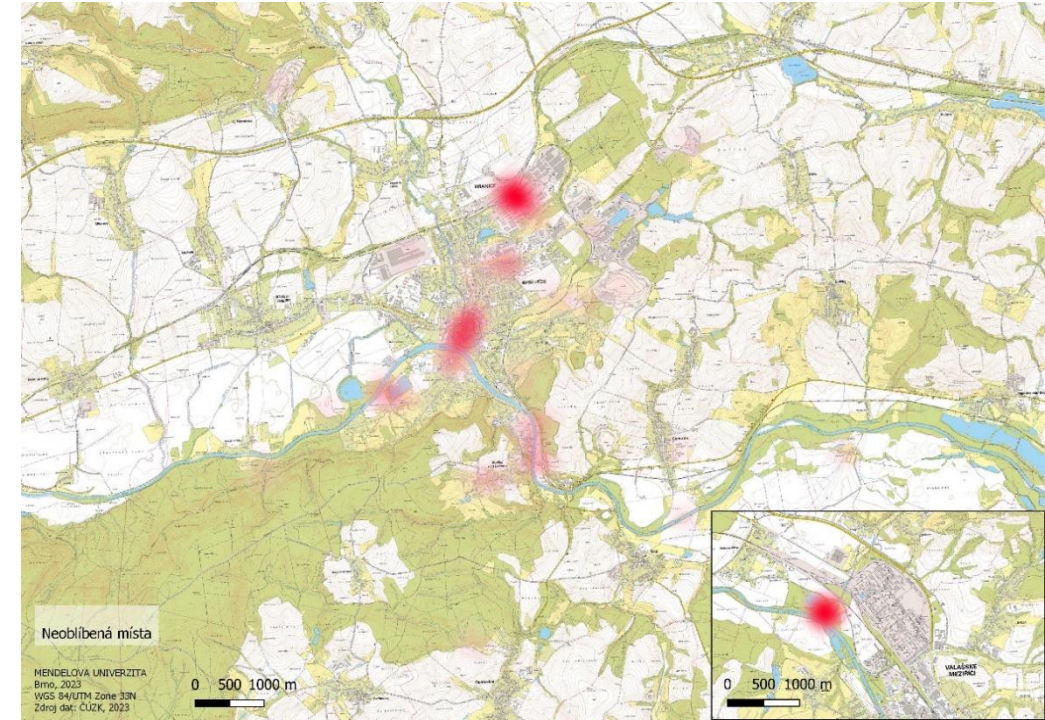
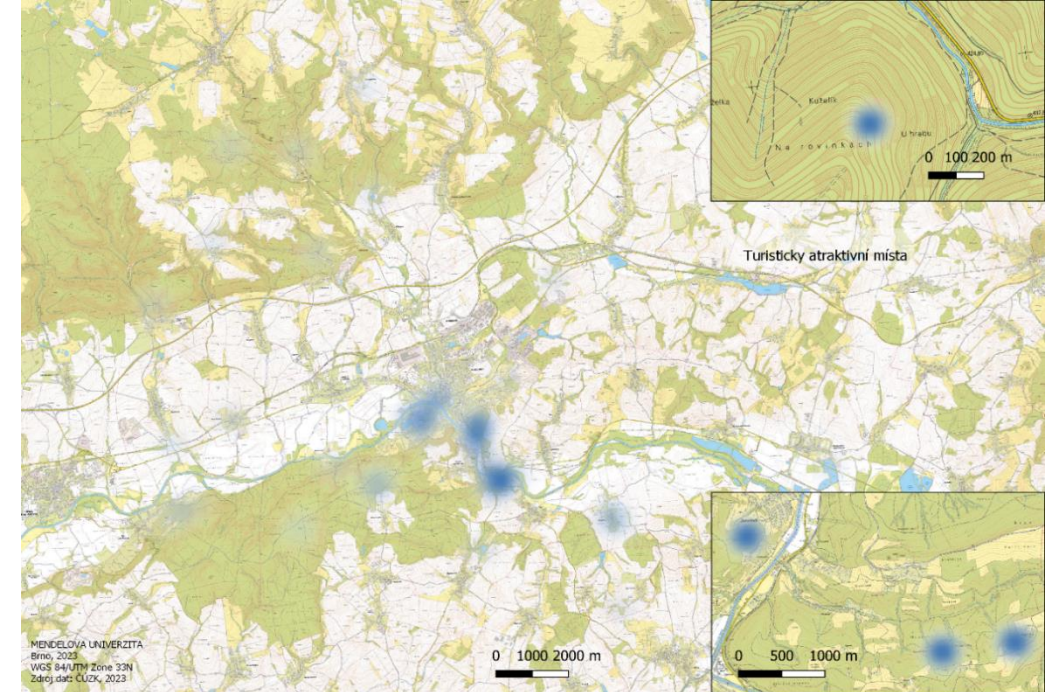
- 100 personal interviews
- 335 questionnaires
- almost half of the visitors come from a distance of over 100 km
- the world's unique is the main driving force
- only a fifth was accommodated

Preference respondentů (dotazník)



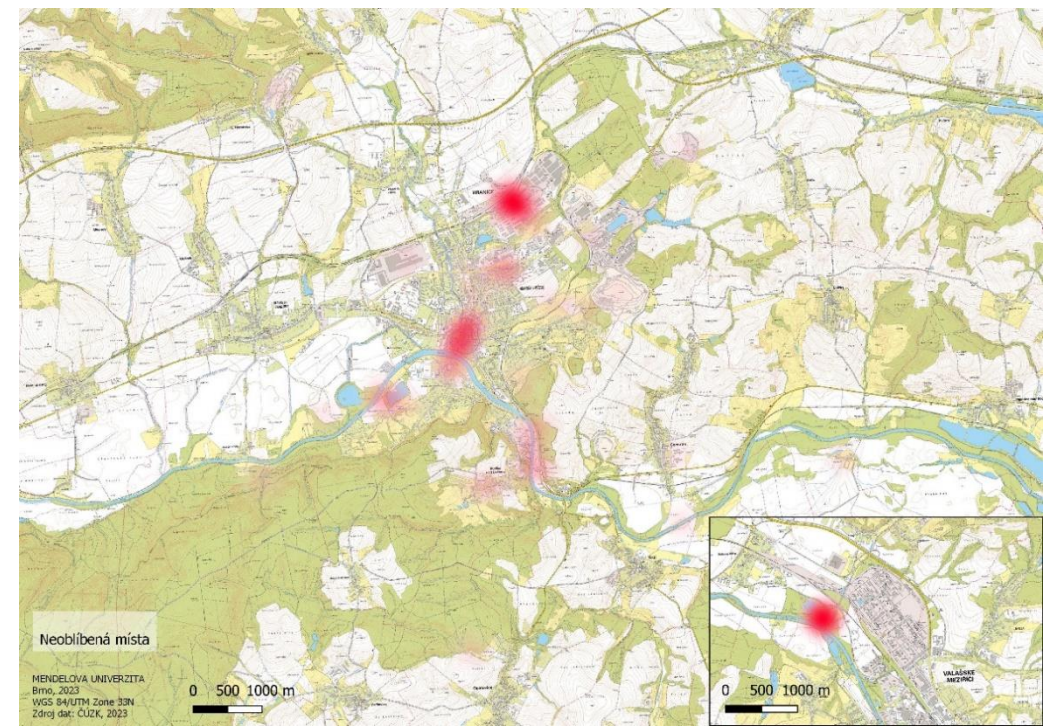
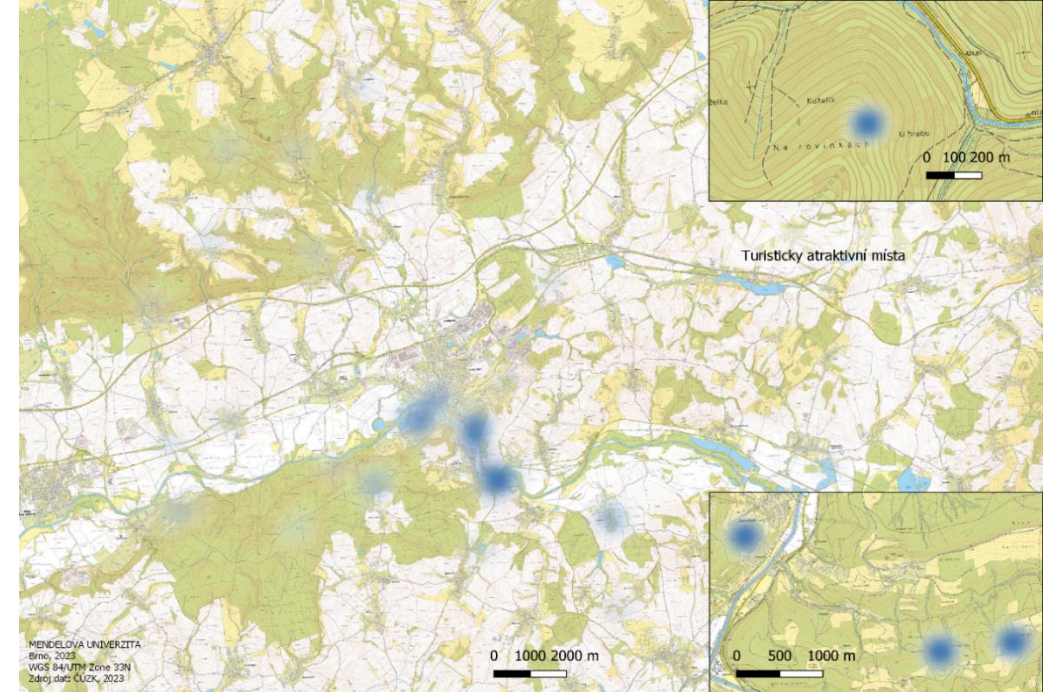
Visitors attitudes to tourist and spatial conflicts

- **tourists** most often lacked a restaurant or snack stand, tourist infrastructure, educational trails, and overall connectivity of the location, including better information about the region's values, interesting localities, and services.
- most respondents spent one day in the locality and continued to other attractions outside the region



Local Administrations attitudes to tourist and spatial conflicts

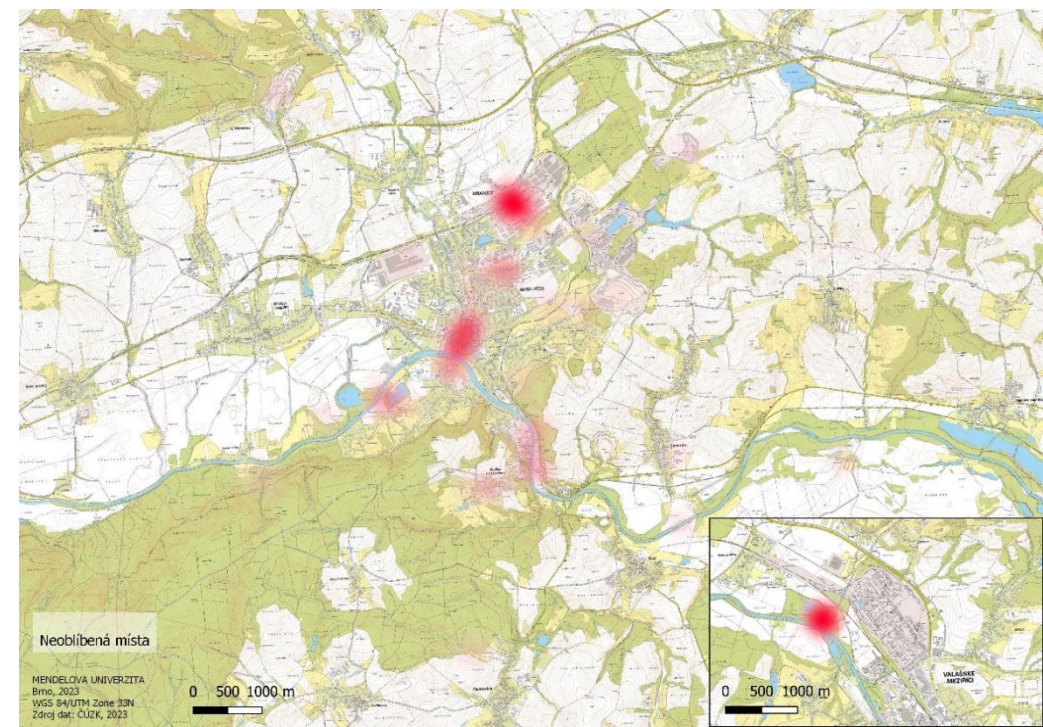
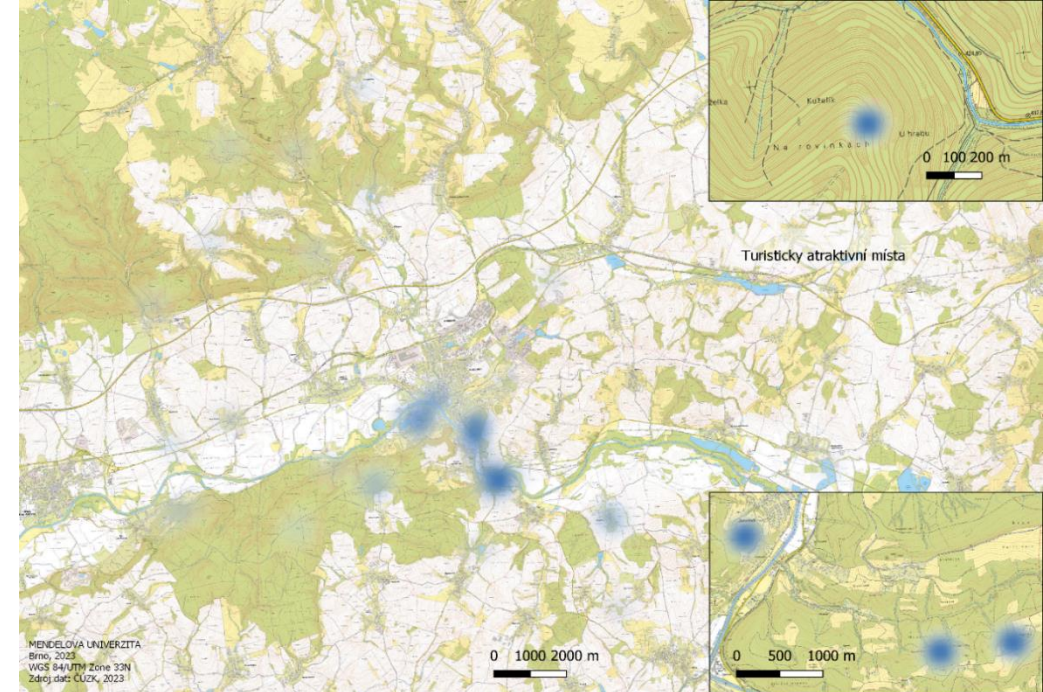
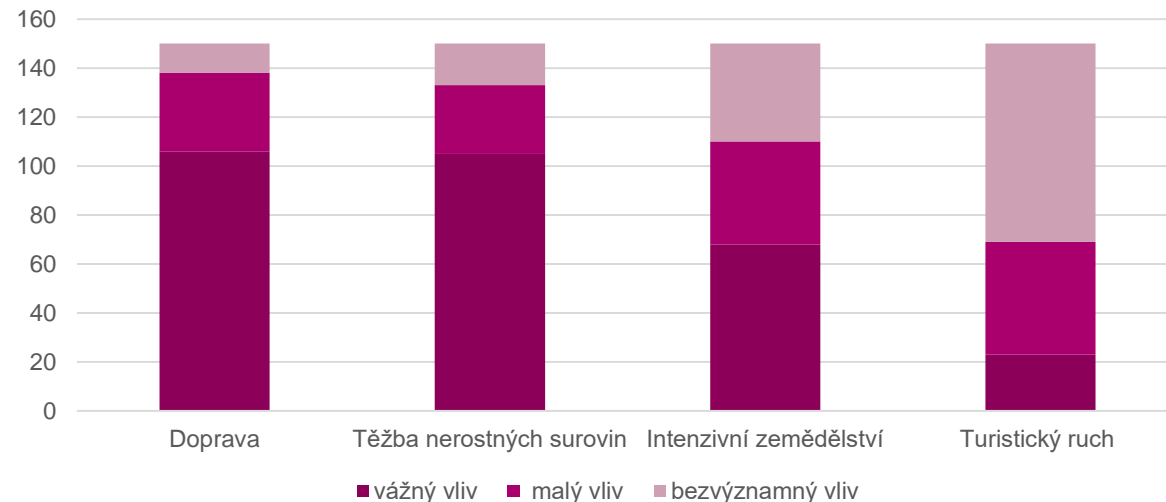
- the necessity of trail revitalization (e.g., improvement of trail drainage and tourist infrastructure).
- modernization of tourist services and equipment.
- tourist attractiveness enhancement,
- development of comprehensive (unified) value management plan (natural and cultural balanced).
- the goal is to keep visitors in the region and change the location's transit character.
- HA's excessive tourist attendance and the significant conflict between tourism and nature conservation.



Residents attitudes to tourist and spatial conflicts

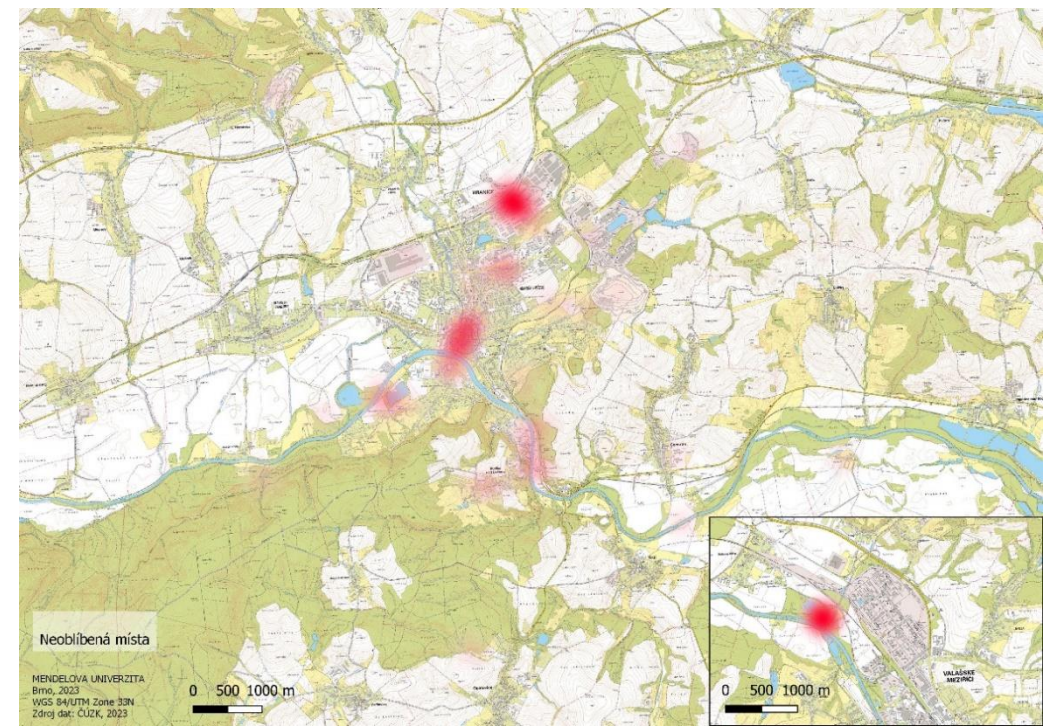
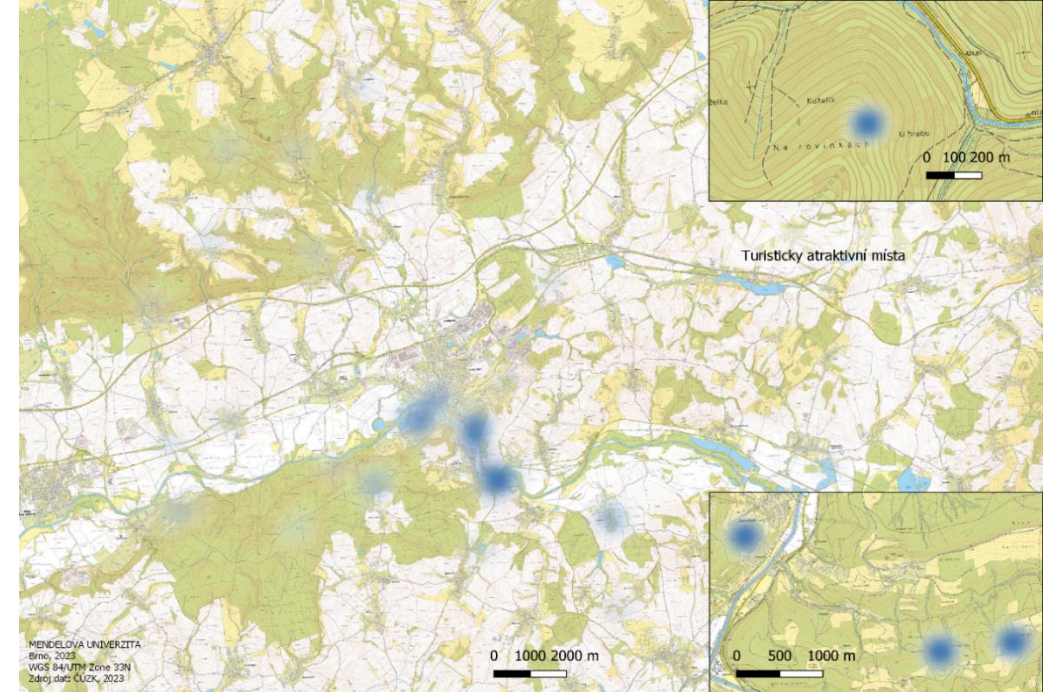
- most of the spatial conflicts are located in the built-up area (+ minimum of problems were identified in the open landscape).
- transport and mining are seen as the most significant problems in the area.
- residents spoke very positively about the role of tourism, and they support tourist development.

Disturbance assessment in Hranice Karst



Experts attitudes to tourist and spatial conflicts

- landscape permeability + fragmentation.
- small ration of green infrastructure.
- coordination/cooperation/community/cohesion...
- traffic and mining – the problem and the challenge for future



THANK YOU!

