

Field landscape and its restoration

A wide, flat, dark brown field under a clear blue sky, with distant hills on the horizon. The field appears to be a recently plowed or restored landscape. The text is overlaid on the top half of the image.

HEDVIKA PSOTOVÁ
ARVITA P SPOL. S R.O.

Landscape plain
pure as a human's hand,
among the mountains
it calls me back
soothes, caresses,
with good words

(Song of Jana Kirschner)

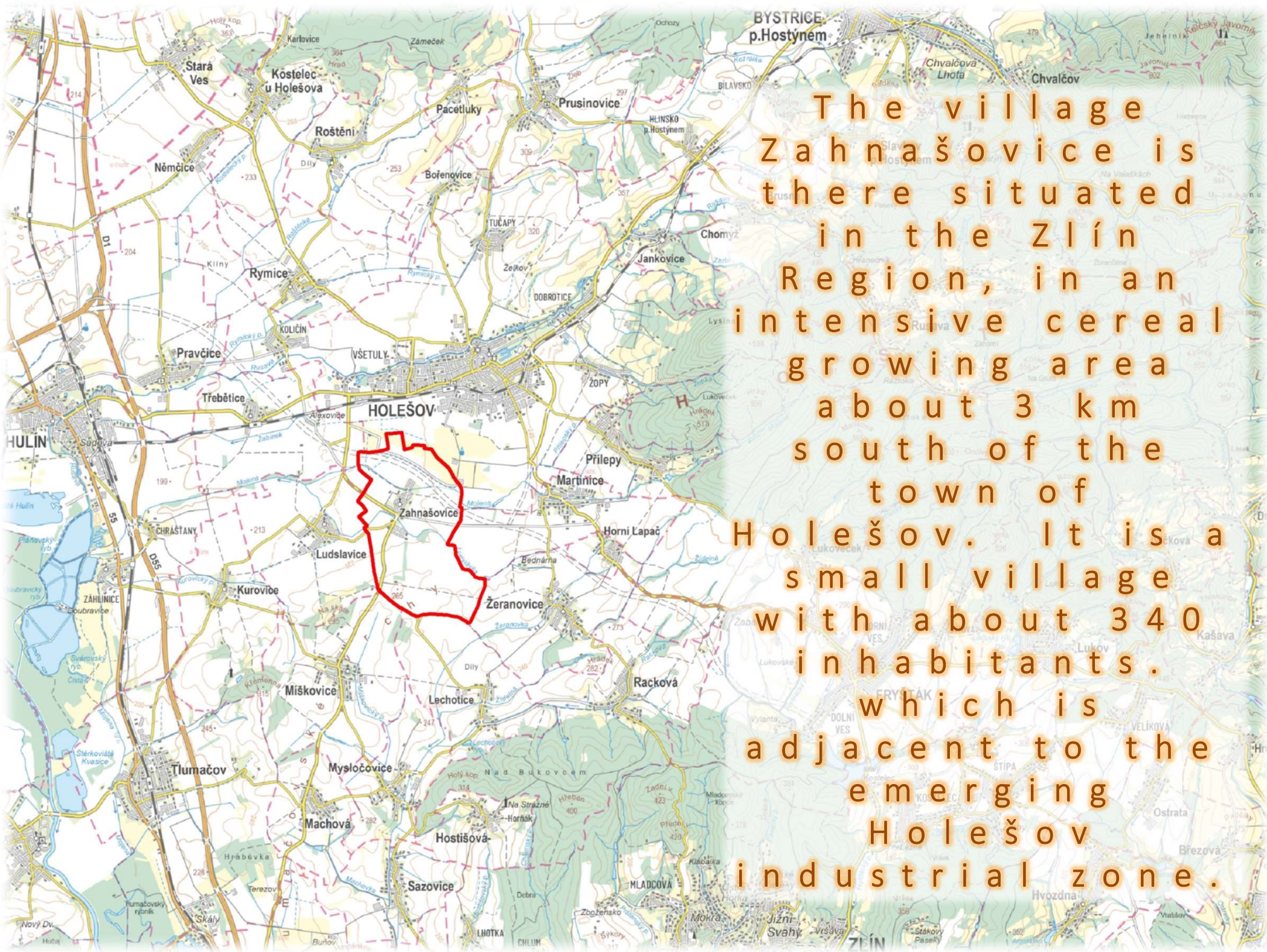


The European
Landscape
Convention
covers
landscapes that
can be
considered
remarkable and
landscapes that
are common and
disturbed, too.





The Czech Republic is the absolute record holder in Europe in the size of soil flanks (57% of arable land is in blocks over 20 hectares)



The village Zahnašovice is there situated in the Zlín Region, in an intensive cereal growing area about 3 km south of the town of Holešov. It is a small village with about 340 inhabitants, which is adjacent to the emerging Holešov industrial zone.

Before the start of the project, the area of interest represented an emptied agrarian landscape, with very low ecological stability and significant manifestations of wind erosion.

The representatives of the Municipality of Zahnašovice decided not to wait and embarked on a gradual and systematic restoration of the landscape as early as 1998 in cooperation with the design studio Arvita P spol. Otrokovice.

The aim of the project:

- revitalizing disturbed areas of agricultural land
- reducing wind erosion
- increasing the ecological stability of the landscape
- retaining water in the landscape
- restoring the landscape character



The restoration of the landscape was carried out gradually, step by step. Over the course of 25 years, the following plans have been implemented:

- Establishment of Biocentrum medřický, area 35 123 m²



The restoration of the landscape was carried out gradually, step by step. Over the course of 25 years, the following plans have been implemented:

- Restoration of the pond, area 3 000 m²



The restoration of the landscape was carried out gradually, step by step. Over the course of 25 years, the following plans have been implemented:

- Creation of small water and wetland areas in the floodplain of Ludslavka, area 2 200 m²



The restoration of the landscape was carried out gradually, step by step. Over the course of 25 years, the following plans have been implemented:

- Planting of new linear greenery with a total length of more than 9 km



The restoration of the landscape was carried out gradually, step by step. Over the course of 25 years, the following plans have been implemented:

- Planting of trees on TSES (territorial system of ecological stability) in the number of 26 736 pieces



The restoration of the landscape was carried out gradually, step by step. Over the course of 25 years, the following plans have been implemented:

- Establishment forest, area 8 200 m²



The restoration of the landscape was carried out gradually, step by step. Over the course of 25 years, the following plans have been implemented:

- Reconstruction of the bank vegetation of the Ludslávka stream



The restoration of the landscape was carried out gradually, step by step. Over the course of 25 years, the following plans have been implemented:

- Change of the type of land in the area of 26.3 ha from arable land to grassland or orchard



Over the past 20 years, the current state of the landscape has improved and the current state of the landscape has improved significantly.



Biodiversity
has increased,



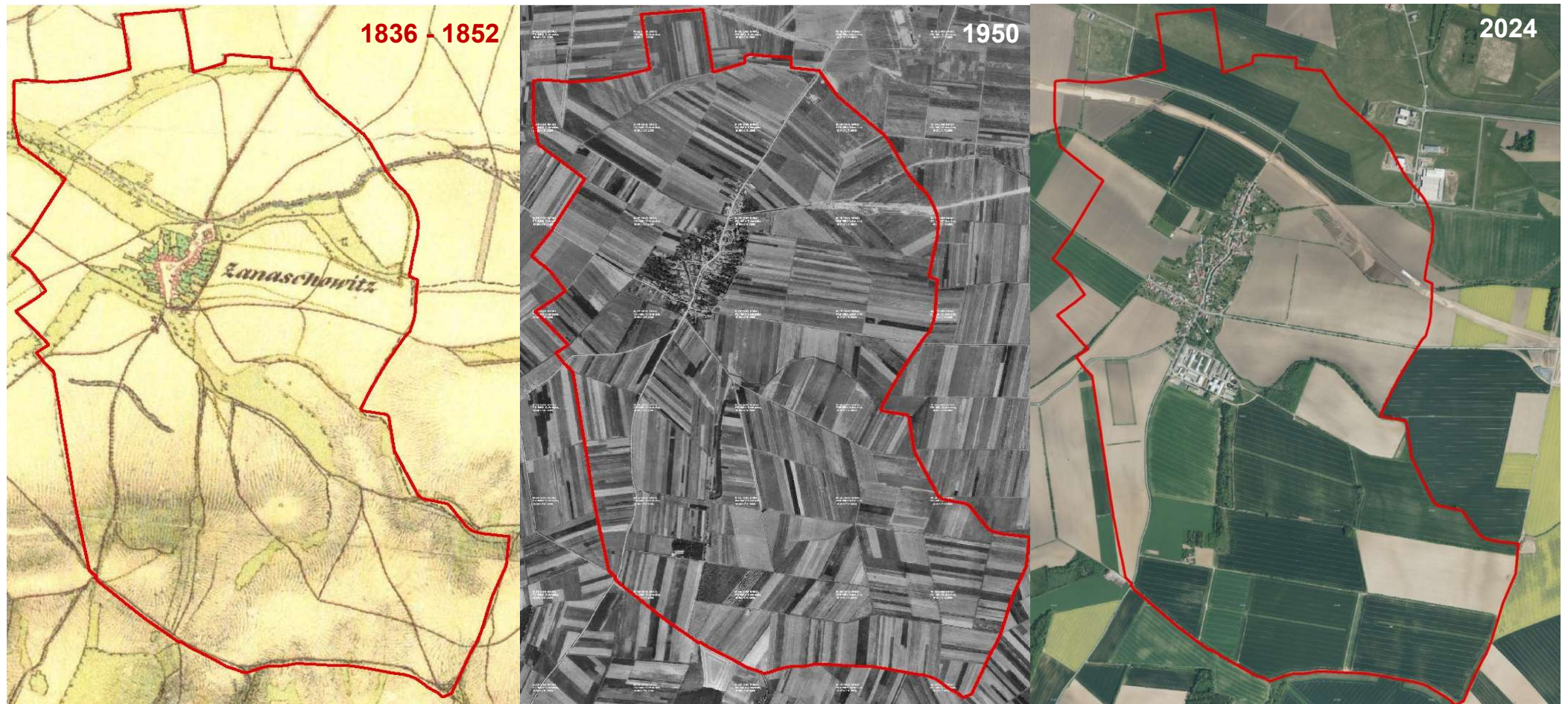
and new
species have
appeared.



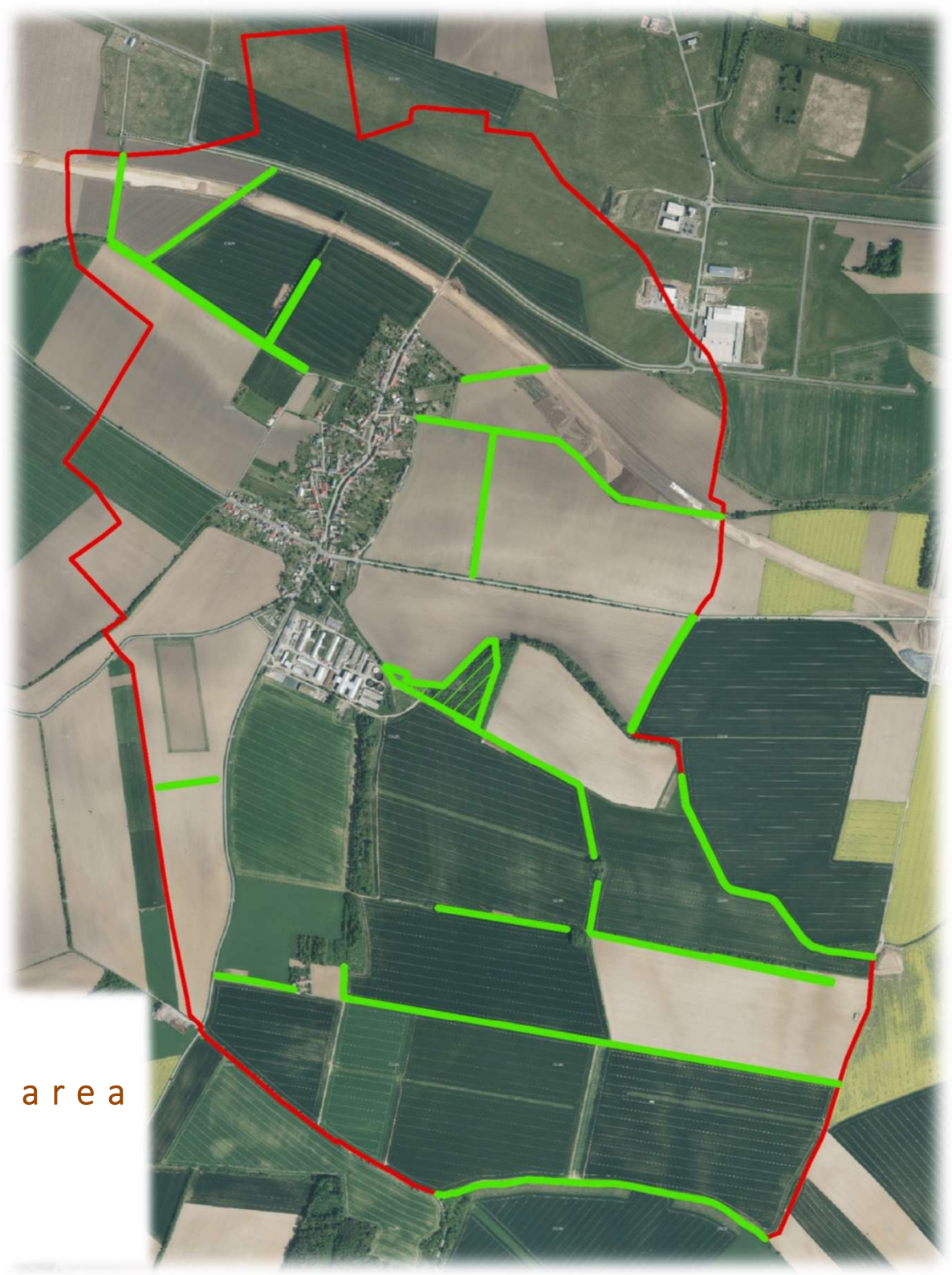
Outdoor events such as Hunter's Day, Children's Day, Pond Unlocking, etc., are held at the restored sites. The paths planted with alleys of fruit and natural trees are ideal for walks and rides.



On the example of a small village, it is shown that the most important role in landscape restoration is not played by the legal framework or subsidies, but by the active approach of the inhabitants and the municipality, which is usually a significant owner of the land.



Realized elements
in Zahnašovice



- Zahnašovice cadastral area
- ▨ local biocentrum
- linear planting

Thank you for your attention

ING. HEDVIKA PSOTOVÁ

**Arvita P spol. s r. o.
Příčná 1541, Otrokovice**

**tel.: 577 938 161
e-mail: arvita@arvita.cz
www.arvita.cz**

